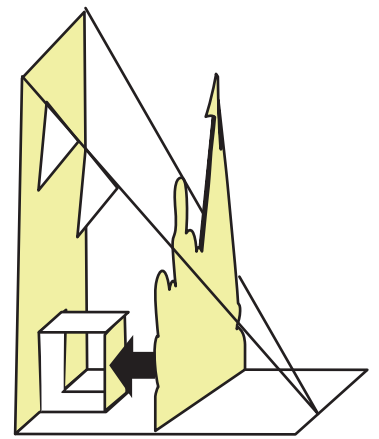
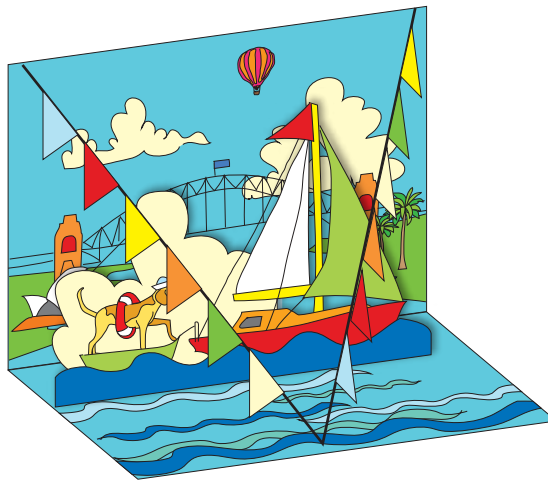


MAKE YOUR OWN NAUTICAL POP-UP CARD

Follow the instructions to create your own adorable nautical pop-up card.



MATERIALS

- This template printed or pasted onto 200gsm card
- Scissors
- Glue
- sticky tape
- 30cm length of cotton twine

INSTRUCTIONS

Step 1

Cut out all your card template pieces along the dotted lines.

Step 2

For the pop-up card insert, fold it in half and cut along the solid lines in the centre as marked. Push this 'pop-up' flap forward so that it sticks out from the card insert like a step.

Step 3

Glue the insert onto the blank side of your card and in the centre. Do not glue down the pop up flap. There should be a margin of space around all sides and the fold lines of each card piece should match up.

FOLD

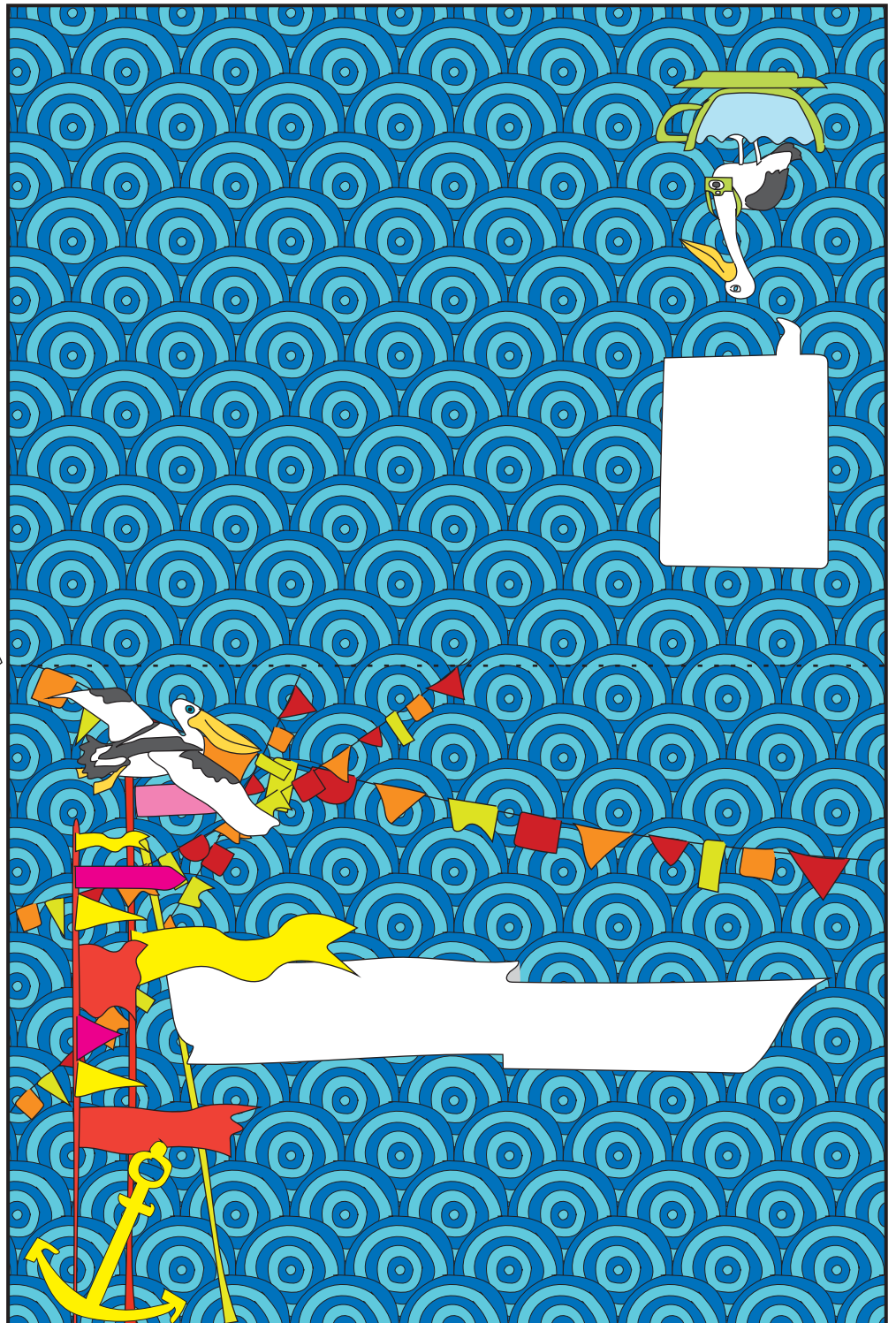
Step 4

sticky tape your sailboat figure onto the pop-up flap in the position marked.

Step 5

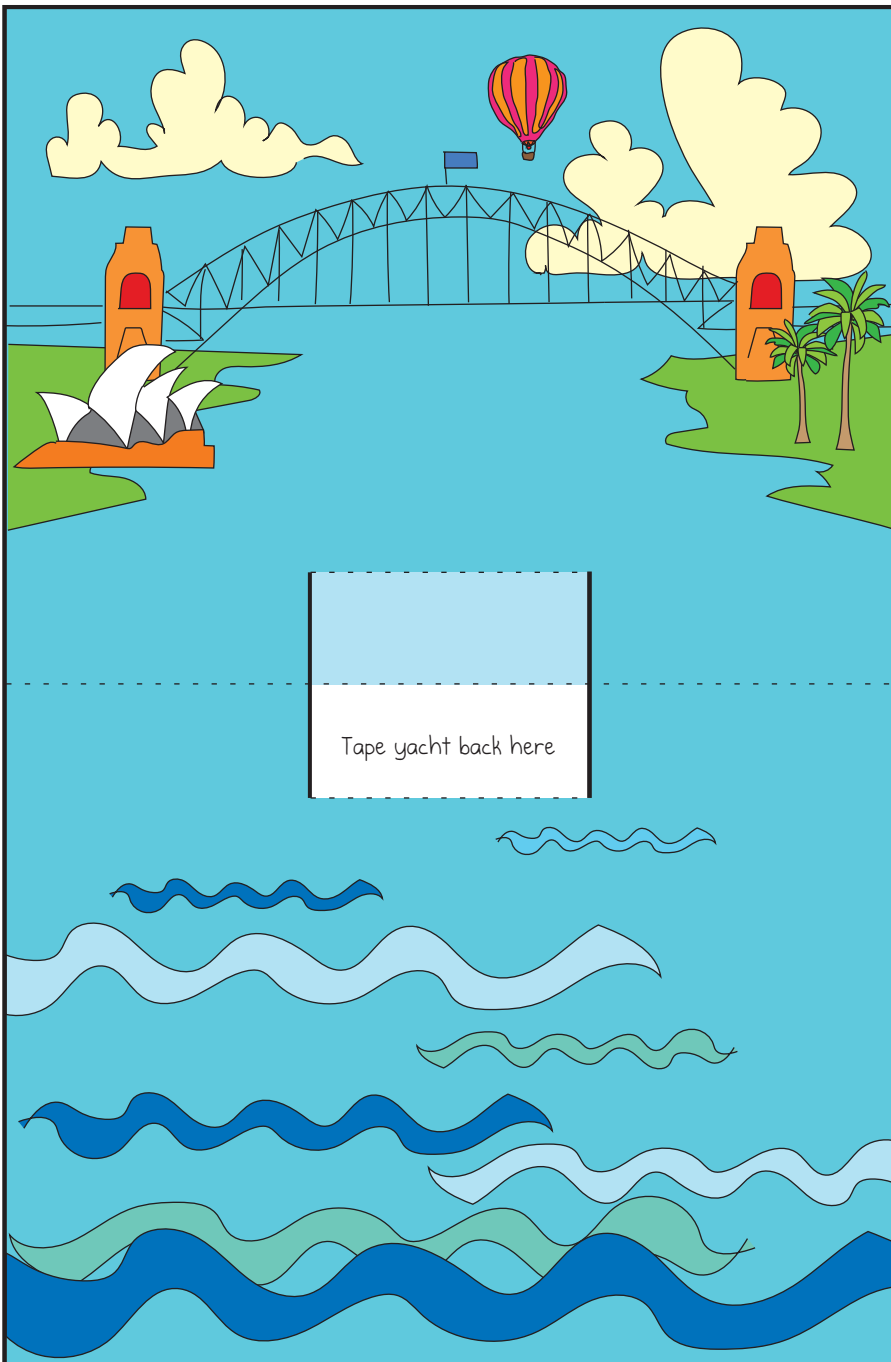
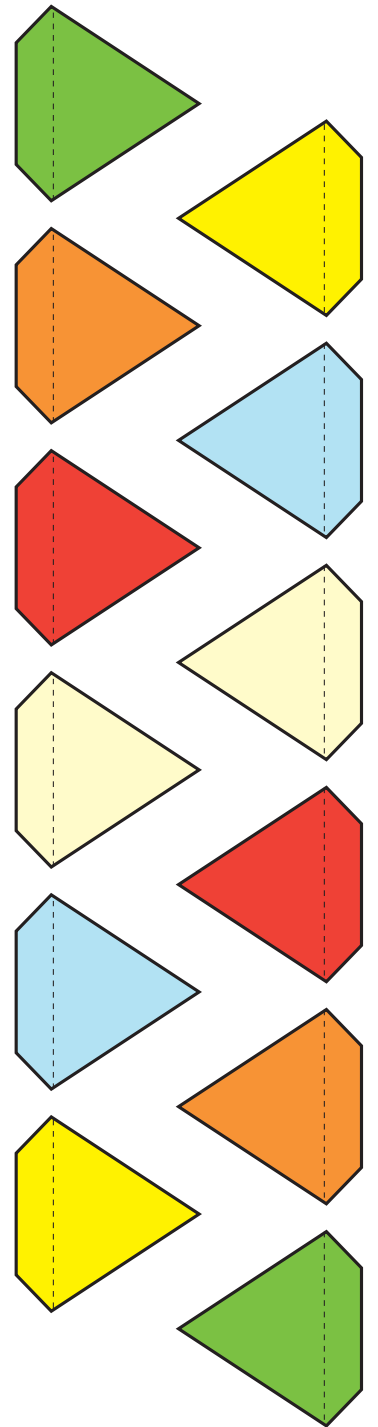
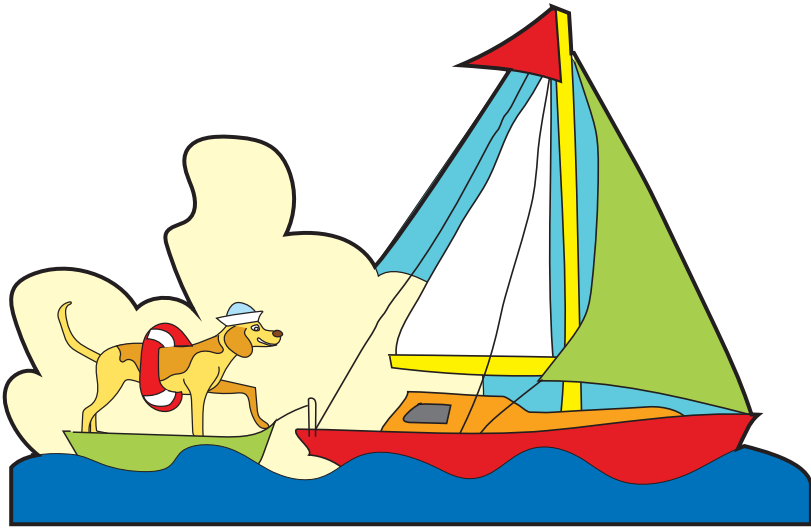
Sticky tape your bunting flags to some string at 3mm intervals and tape the ends of the string to either side of the card. Tape the midpoint of the bunting string to the middle of the bottom of the card.

Now it's time to add your message and share your sweet sailboat card with someone special.



**FRONT
CARD OUTSIDE**





Tape yacht back here

INSERT