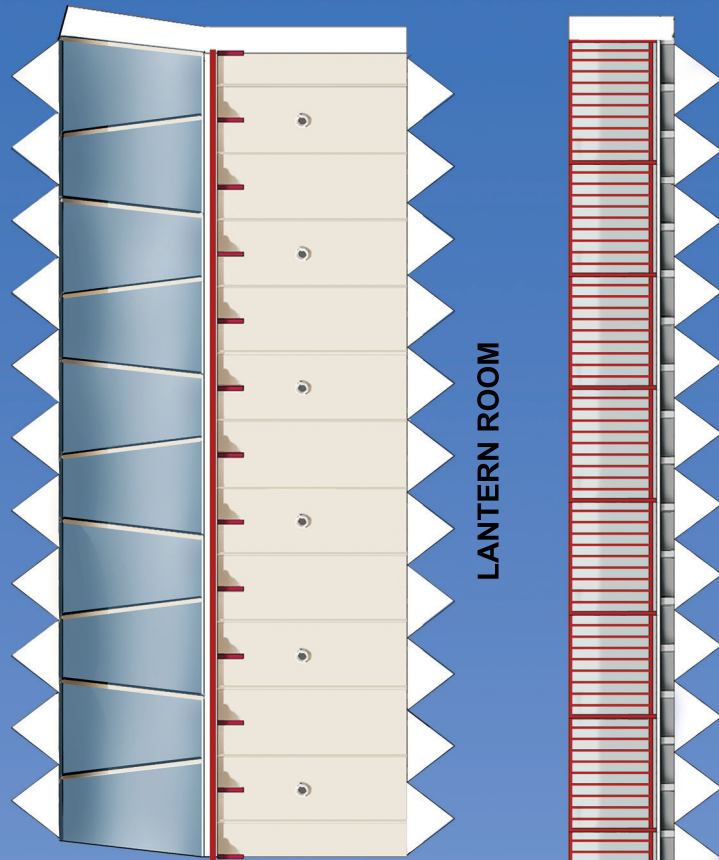
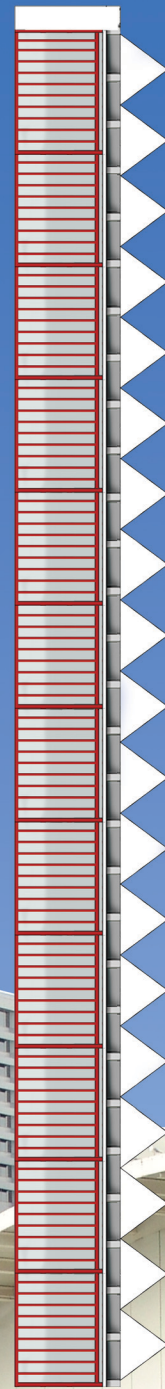


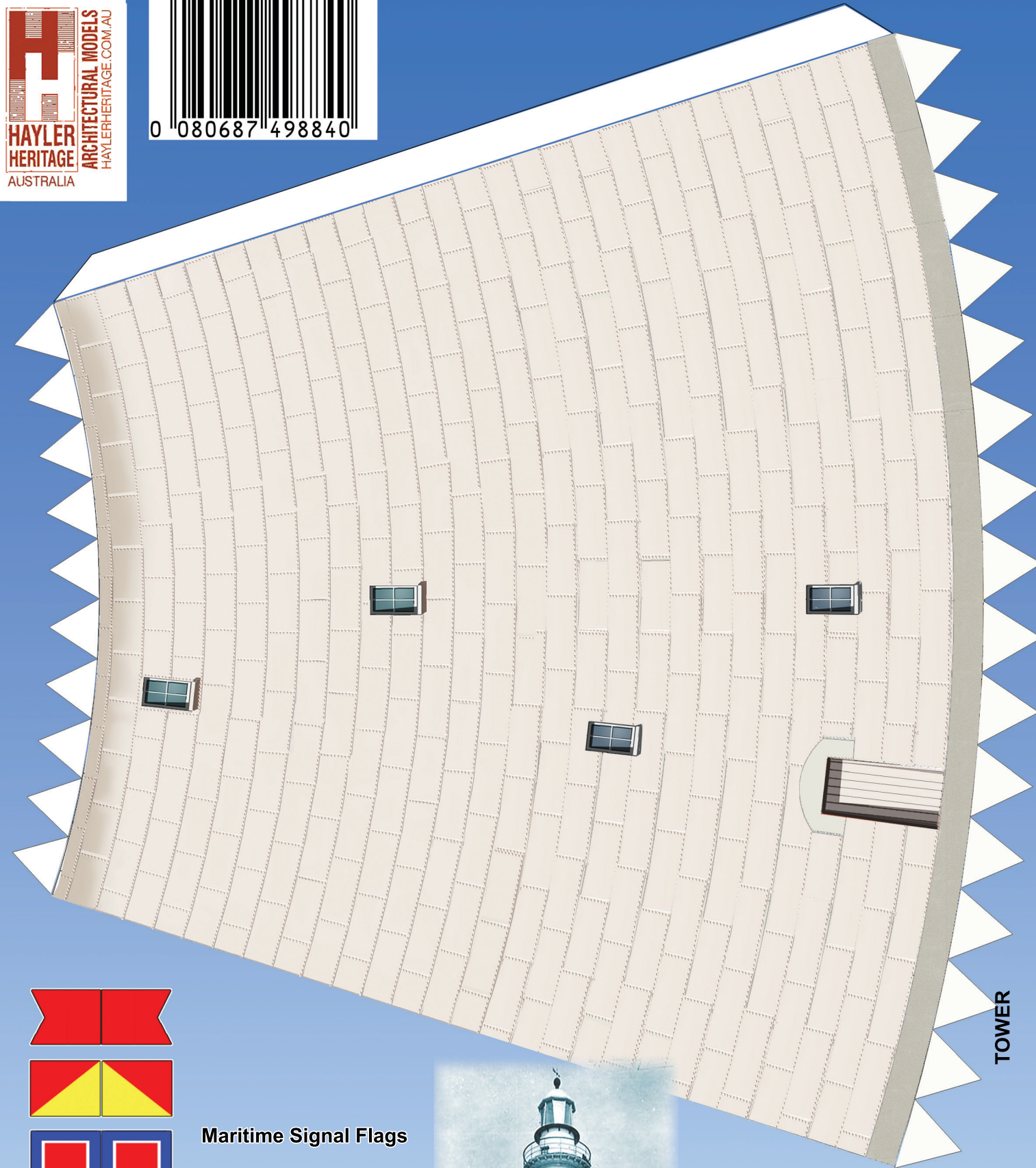
CUPOLA BASE



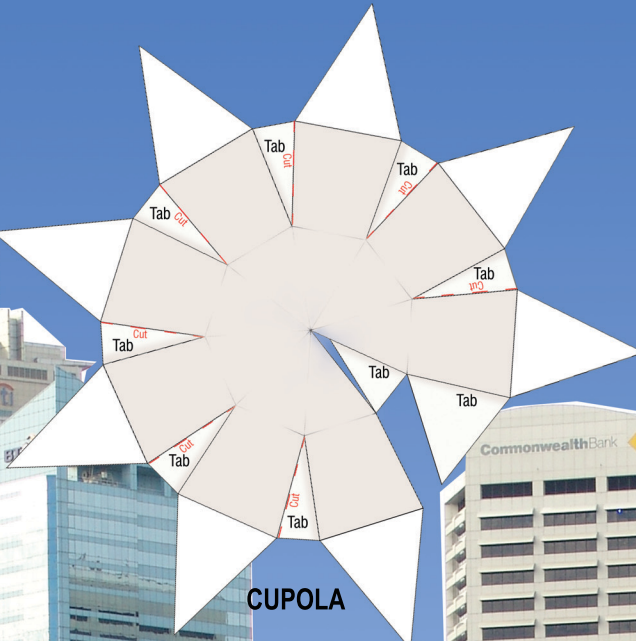
LANTERN ROOM



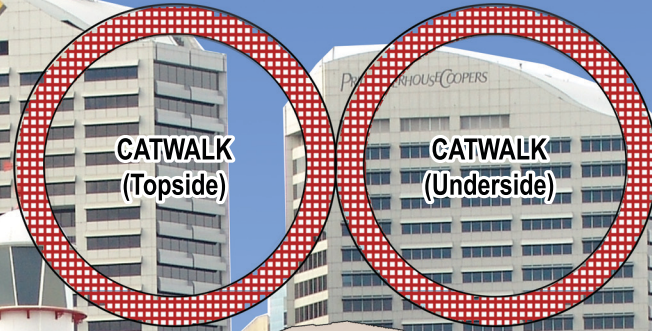
BALUSTRADE



TOWER

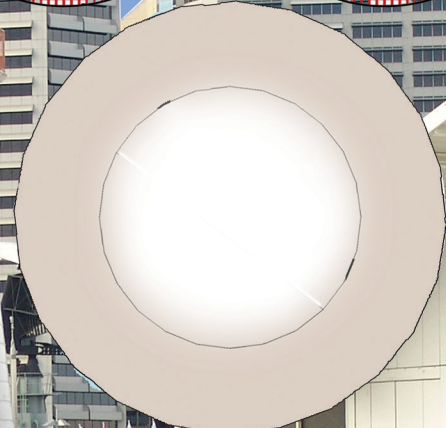


CUPOLA



CATWALK (Topside)

CATWALK (Underside)



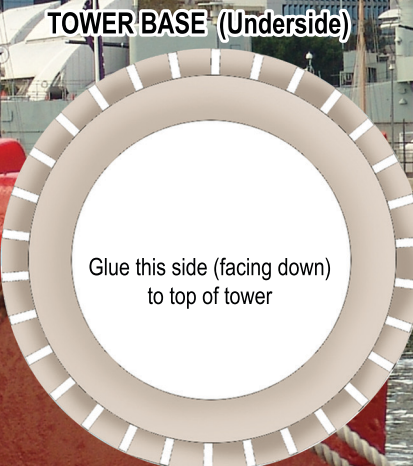
GALLERY AND LANTERN ROOM BASE (Topside)

**Cape Bowling Green Lighthouse**

Model Assembled by: .....

Date: .....

Australian Government  
Australian Maritime Safety Authority

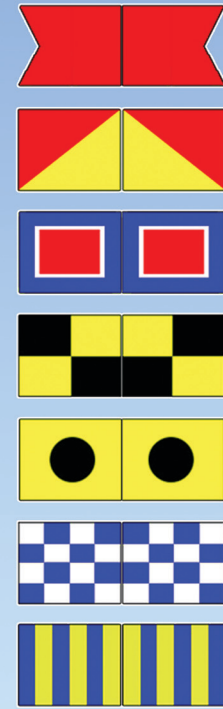


TOWER BASE (Underside)

Glue this side (facing down) to top of tower

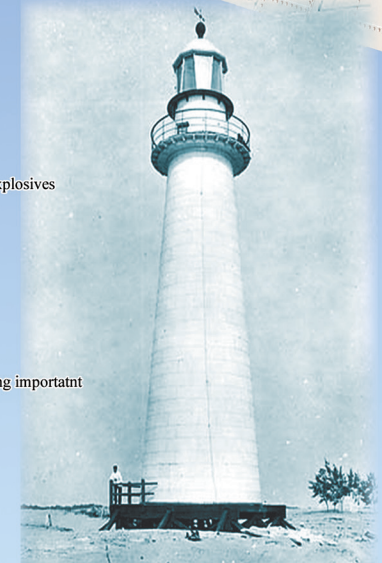
GALLERY BASE (Underside)

# Cape Bowling Green Lighthouse Card Model Kit



**Maritime Signal Flags**

- B** I am taking on or discharging explosives
- O** Man overboard
- W** I require medical assistance
- L** You should stop, I have something important to communicate
- I** I am altering my course to port
- N** No (negative)
- G** I require a pilot



Cape Bowling Green Lighthouse 1917  
Source: National Archives of Australia



# Cape Bowling Green Lighthouse

## Assembly Instructions

### 1. Tower Shaft

Form a curvature in the tower shaft by gently rolling or massaging it - taking care not to crush it. Align overlap and glue. Fold glue tabs inward at the top and at the bottom.

*Hint: During assembly clean off any excess glue with a damp tissue.*

### 2. Cupola

Assembling the cupola requires patience - so don't hurry! You need to apply glue onto each of the small glue tabs - but do only **one** at a time! **See diagram A.** Take your time. (Squeeze firmly between finger and thumb and hold for about 30 seconds or so. Then, and **only** when it has set, glue and align the next small tab. As you align and glue the small tabs you are incrementally distorting the flat 'star' piece of card into a rough dome shape - the Cupola! When dry, fold the triangular tabs under and glue onto printed side of the Cupola Base.

### 3. Balustrade

Form a curvature in the balustrade and glue at ends. Printed side facing outward. Fold tabs under. Place **Gallery and Lantern Room Base (Topside)** part (printed side up) within the balustrade from the top and glue to upper side of triangular balustrade tabs.

### 4. Gallery Base

Glue **gallery Base (Underside)** to underside of 3 above. Printed side facing down. The triangular tabs of the balustrade are sandwiched between the 2 base pieces.

### 5. Lantern Room

Form a curvature in the lantern room as per tower section (similar to step 1 above). Align overlap and glue. Fold the triangular tabs inward at top and bottom. Then glue the lantern to the **Gallery and Lantern Room Base (topside)** assembly. Be sure to place the Lantern Room the correct way up (ie glass to the top).

### 6. Catwalk

Fold and glue Catwalk part together. Slide catwalk part over lantern and position along red line (at the junction of glass and walls of the lantern room). Use 4 or 5 small dabs of glue to hold Catwalk in place.

### 7. Cupola Base/Cupola assembly

Glue to top of **lantern**. For convenience, hold assembly upside down and centre the lantern onto the cupola base by eye when gluing together.

### 8. Glue Lantern/ Cupola assembly

onto top of tower part, by applying dabs of glue to the folded triangular tabs.

### 9. Glue tower/Lantern assembly

to **Tower Base**. Printed side of Tower Base faces downwards.

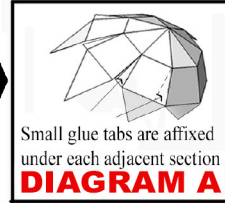
### 10. Flags

Cut out the flags below and fold flags (long the centre line) and glue over a length of cotton (not supplied). The cotton can be connected to the lighthouse by making a small cut in the top of the balustrade and another at the top of the tower base. Apply a drop of glue to the cuts and insert cotton in the top and bottom cuts and allow to set.

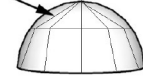
*Hint: Be sure to connect the flags in the correct order as shown so as to read "B O W L I N G"*

## WHAT YOU WILL NEED

- PVA Craft Glue ('Selleys' 'Bostich' or 'Crafter's Choice' etc) or as a second choice PVA wood glue
- 30cm of cotton thread (to hold the flags)



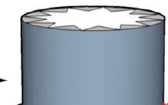
CUPOLA



CUPOLA  
BASE



LANTERN



DABS OF  
GLUE

CATWALK



GALLERY  
TOPSIDE



BALUSTRADE



GALLERY  
UNDERSIDE



(Cotton 'rope'  
not supplied)

TOWER



TOWER  
BASE



Photograph of Model  
(28cm high)



Australian Government

Australian Maritime Safety Authority