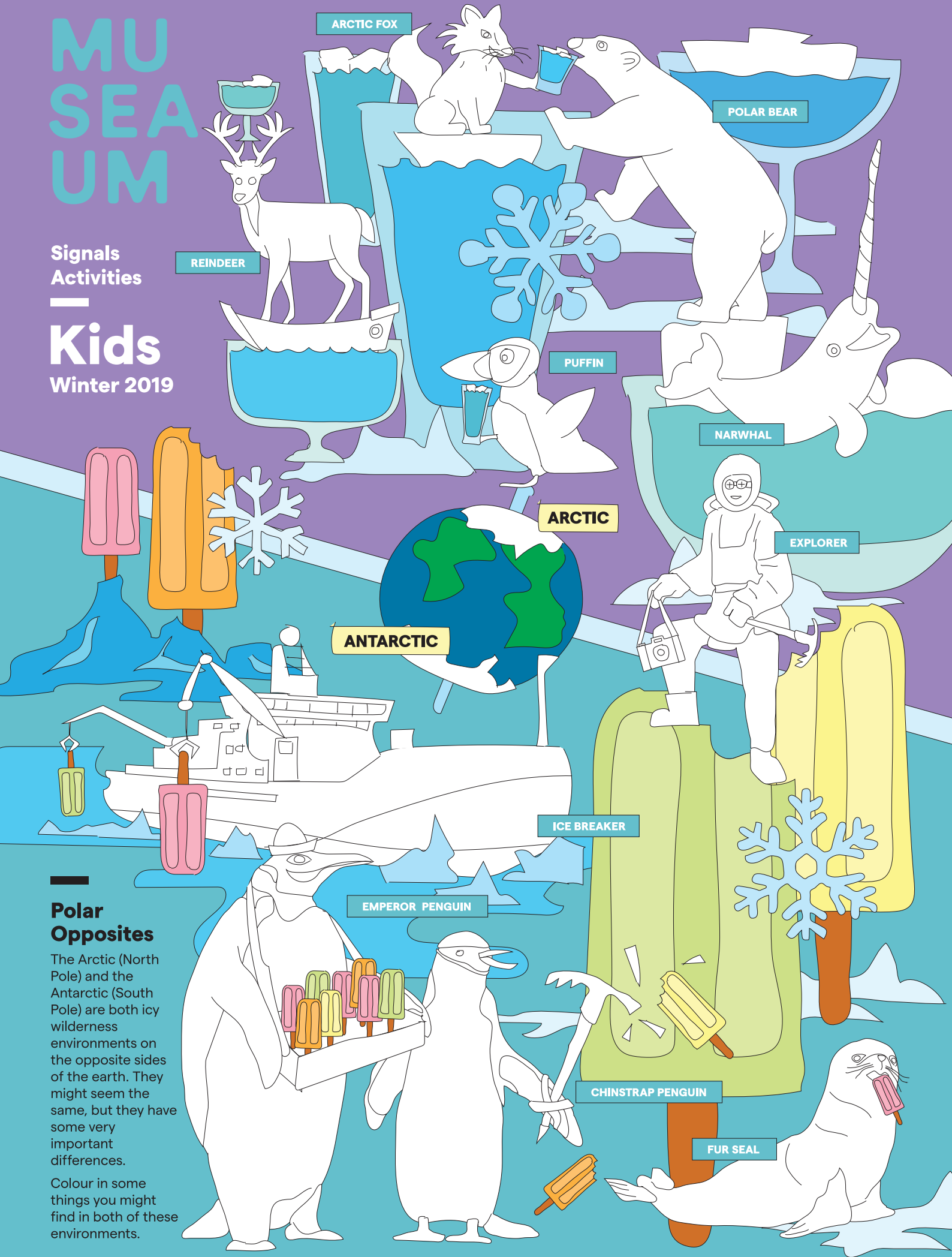


MUSEUM

Signals
Activities

Kids

Winter 2019



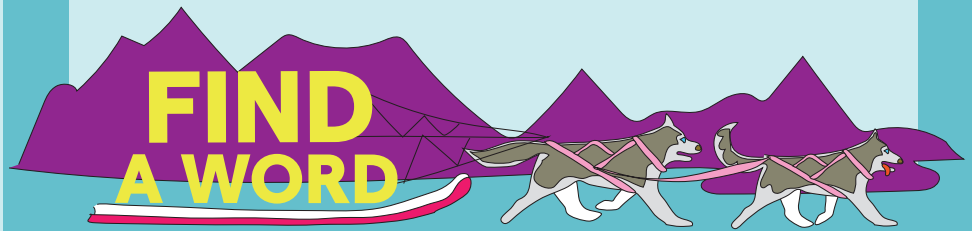
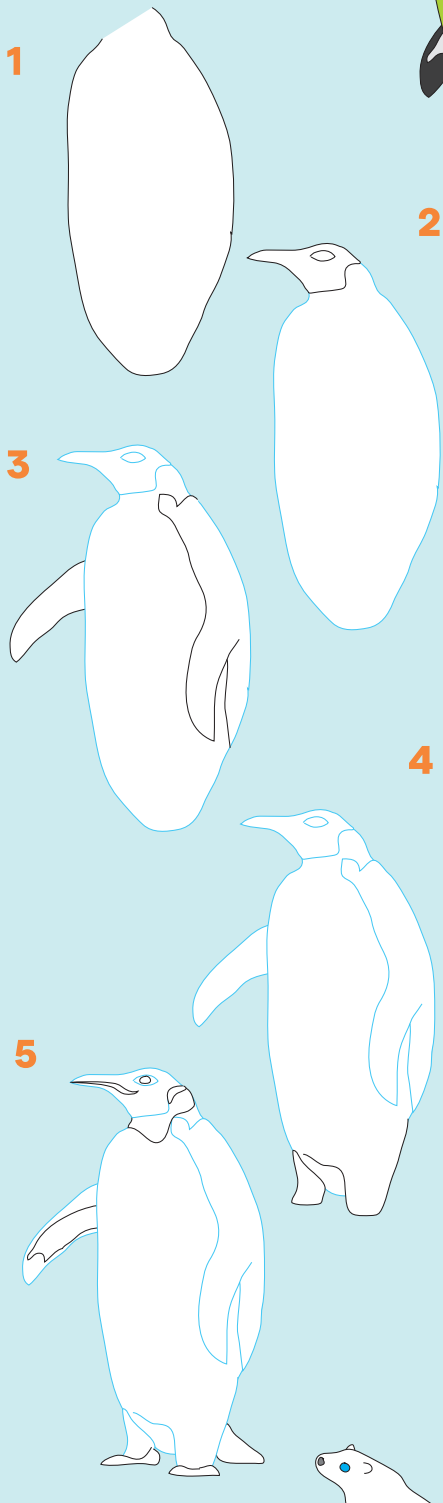
Polar Opposites

The Arctic (North Pole) and the Antarctic (South Pole) are both icy wilderness environments on the opposite sides of the earth. They might seem the same, but they have some very important differences.

Colour in some things you might find in both of these environments.

How to draw an Emperor Penguin

Follow these simple steps



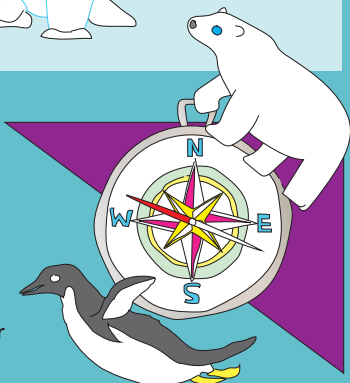
Find the words below. They could be backwards, forwards, diagonal or downwards.

- | | | | | | |
|----------|------------|----------|-----------|-------------|----------|
| Penguins | Seal | Sledging | Discovery | Exploration | Blizzard |
| Glacier | Albatross | Iceberg | Blubber | Compass | Goggles |
| Reindeer | Cloudberry | Tundra | Inuit | Chukchi | Nenet |
| Inuksuit | Polar bear | Walrus | Beluga | Orca | Narwhal |

E L F C H O V X Z F E G E A Y S T U H K
 T U A E C H U K C H I E C K E S K A L L
 R E X P L O R A T I O N O O X O E D T O
 E R S S O R T A B L A G E X M P C A J O
 O R L G U I I P R B S H S N X P T X L W
 T E E X D L L O U W E A E P E U A T Y S
 S I D T B I R E I C A L G X X T X S M N
 R N G T E K S X X S N I U G N E P X S X
 W D I I R R M C P E R O O G X X X X B O
 K E N R R I A X O X C H D R A Z Z I L B
 Z E G T Y M F K L V P I X B C P U E U M
 F R R S S U R L A W E X N F P A R O B I
 O R K W T U N D R A U R X T T O R A B W
 O D S S Y G R E B E C I Y G O G G L E S
 Y R E S E D A O E A X X N X X X X R T
 P S A T E F M N A X X T I U S K U N I K
 T Y S E I P N A R W H A L X I X L L O H
 T P H X Y D P O N N O F E R M T Y O L L
 S R Y Y T X U W P E A U R W K O P O U P

DID YOU KNOW?

Penguins and polar bears never meet. There are no penguins in the Arctic. And there are no polar bears in the Antarctic.



WHAT DOESN'T BELONG HERE?

Do you know your Antarctic from your Arctic?

Spot the ODD items in this **Arctic** scene



MORE DIFFERENCES

The Arctic is sea surrounded by land. It has plenty of plants, and groups of native and other people live there. It has rivers, mountains and many land animals. It's very cold, but not as cold as Antarctica.

Antarctica is land surrounded by sea. It has barely any plants, and no groups of native people. Its largest land animal is an insect, as most animals live in the sea. Antarctica is the coldest place on earth.

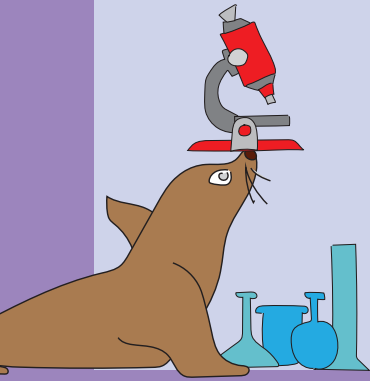
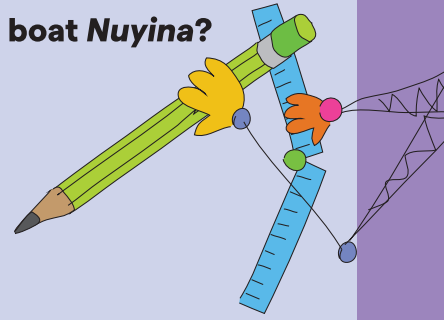
Spot the ODD items in this **Antarctic** scene



At the museum...

Can you find the model of Australian Antarctic Division research boat *Nuyina*?

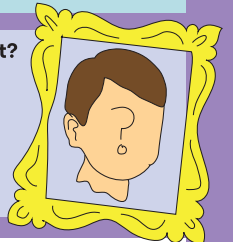
—
Draw it here



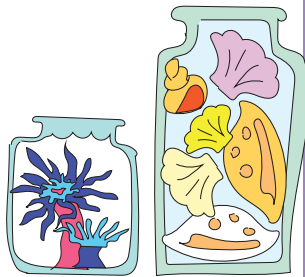
Look inside the science laboratories.
What is the strangest thing you can see?

If you were going on a scientific expedition to Antarctica,
what would you pack? Who would you invite to go with you?

Who are the expeditioners on board this boat?
What are they doing?



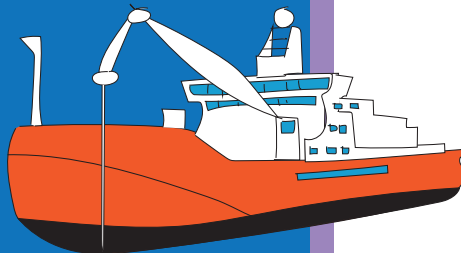
Draw a picture or write a story inspired by what is going on
here on board the *Nuyina* vessel.



DID YOU KNOW...

As well as scientific laboratories, *Nuyina* has other scientific equipment, including a moon pool, drop-keels, multi-beam bathymetric and scientific echo sounders, fisheries sonar systems, hydrophones and underwater cameras.

Nuyina can carry 117 scientists and expeditioners and 32 crew for up to 90 days.



Share your creations
with us

web@sea.museum
@sea.museum
#seamuseumkids



More activities to
create at home

Download our printable
templates for more creative
activities on the website at
sea.museum/kidscraft



More things to do
at the museum

Visit the museum to enjoy
our winter programs
and exhibitions
sea.museum/kids