

Snowy Owl

ARCTIC ADVENTURE!

Pull on your snow boots and hop on your sleds - we're travelling to the icy Arctic for some un-bear-ably cool adventures!

It's freezing cold, but there are also rivers and plants. There are lots of people who live there too, and polar bears of course, but never any penguins!

Here are some things you might find in the Arctic to colour in.

AUSTRALIAN NATIONAL MARITIME MUSEUM

SIGNALS ACTIVITIES

KIDS

Moose

Lemming

Arctic Hare

Arctic Fox

Polar Bear

Puffin

SUMMER 2017-2018

DECEMBER, JANUARY, FEBRUARY

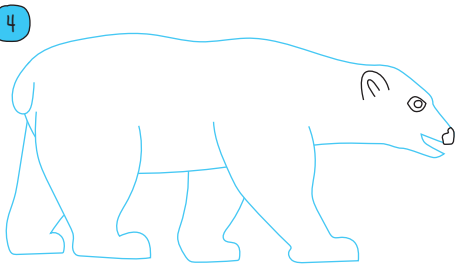
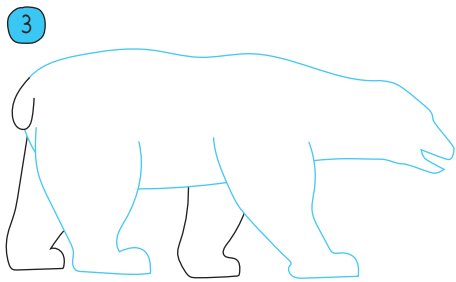
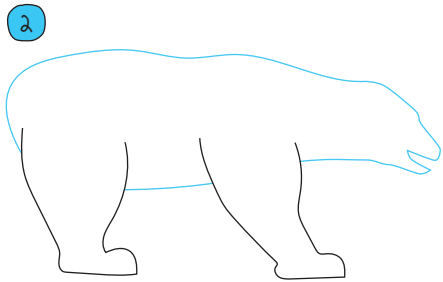
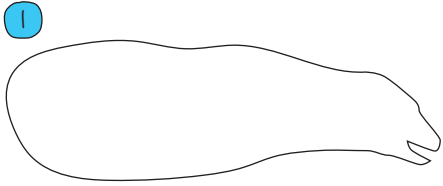
Walrus

Narwhal



HOW TO DRAW A POLAR BEAR

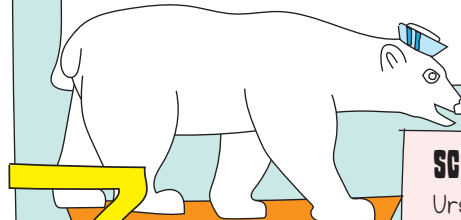
Follow these simple steps to draw a polar bear!



MORE DIFFERENCES

The Arctic is sea surrounded by land. It has plenty of plants, and groups of native and other people live there. It has rivers, mountains and many land animals. It's very cold, but not as cold as Antarctica.

Antarctica is land surrounded by sea. It has barely any plants, and no groups of native people. Its largest land animal is an insect, as most animals live in the sea. Antarctica is the coldest place on earth.



things you might not know about polar bears.

SCIENTIFIC NAME:

Ursus Maritimus, which means maritime bear or sea bear.

WEIGHT:

Up to 700 kg!

FAVOURITE FOOD:

Seal blubber (fat).

'APEX' PREDATOR

Polar Bears are an 'APEX' PREDATOR which means they hunt many other animals.

THEY CAN SWIM

up to 300 km away from land.

Polar bears need **SEA ICE** to hunt, travel and breed, so rising temperatures and melting sea ice are a big problem for them.

Polar bears have sweat glands on their feet so they leave **SMELLY FOOTPRINTS.**

POLAR OPPOSITES

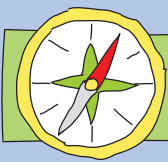
The North Pole (the Arctic) and the South Pole (the Antarctic) are both very ICY places but in many ways they are POLAR OPPOSITES.

Can you match these items with their home - the Arctic or Antarctic?

ARCTIC

ANTARCTIC

- Walrus
- Puffin
- Albatross
- Inuit People
- Weddell Seal
- Polar Bear
- Emperor Penguin
- Reindeer
- Narwhal
- Cities
- Humpback Whale



FIND-A-WORD

Find the words below. They could be backwards, forwards, diagonal or downwards. Do you know what all these words mean? Try and find out.

- | | | |
|---------------|------------|------------------|
| SEA ICE | ICEBERG | PERMAFROST |
| PHYTOPLANKTON | ICE ALGAE | CLOUDBERRY |
| TUNDRA | INUIT | CHUKCHI |
| NENET | SAAMI | INUKSUIT |
| ALBEDO | PTARMIGAN | LEMMING |
| POLAR BEAR | WALRUS | BELUGA |
| BOWHEAD | ORCA | NARWHAL |
| ARCTIC FOX | NORTH POLE | REINDEER |
| CARIBOU | MUSK OXEN | CIRCUMPOLAR STAR |

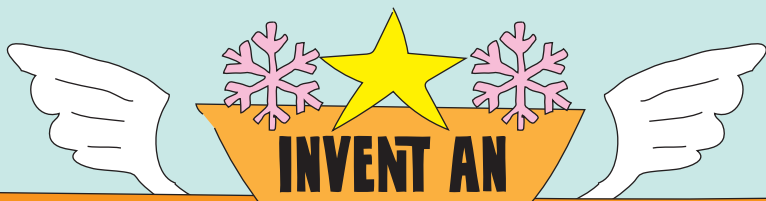


Y S R E W E A R T X L E M M I N G Z K
 I T O R A T S R A L O P M U C R I C L
 G N P H Y T O P L A N K T O N X G L O
 D A E H W O B E A J E L O P H T R O N
 S A R N R U S S T O U C A R I B O U B
 B A M X E O T T C H U K C H I P H D U
 E R A T E T I U S K U N I L L O U B P
 L Y F M C L C K O O T N A I S S T E H
 U X R E I N D E E R X O F C I T C R A
 G P O L A R B E A R G N I E Y N W R L
 A W S R T B C T N A R W H A L O U Y L
 T A T E C H Q U J Z L U O L L Y O I P
 D L E E A A I M M N Y R I G X B G T T
 D R G H E I E N A G I M R A T P E E O
 T U N D R A C M U S K O X E N J I D P
 W S Y G R E B E C I X Y L L E T D M O

ICEBERG MAZE!

This polar bear is hunting for a tasty meal (mmm, seal!) This fishing boat needs to make its way to a port through the icebergs without hitting them. Can you help both of them make their way through the maze?





INVENT AN

ARCTIC SUPERHERO

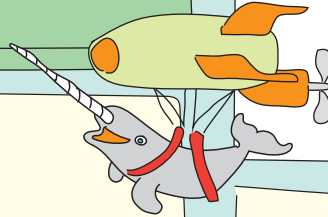
What would they look like, what would they wear?



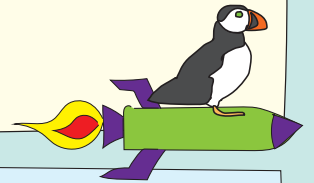
Where would they live?

My Arctic superhero's name is

Imagine you could create an Arctic-protecting superhero. Draw or write about your superhero here.



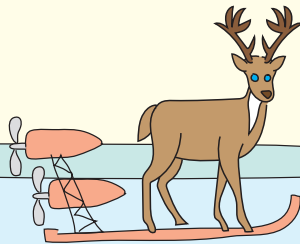
What would their superpowers be?



Who would their friends be?

How would they protect the Arctic from problems like rising temperatures that melt the ice?

Write a story about your superhero here.



SHARE YOUR CREATIONS WITH US

@ANMMuseum #anmmkids



MORE ACTIVITIES TO CREATE AT HOME

Download our printable templates for more creative activities on the website at www.anmm.gov.au/kidscraft



MORE THINGS TO DO AT THE MUSEUM

Visit the museum to enjoy our summer programs and exhibitions www.anmm.gov.au/kids