

# Yots Waterside

Enjoy harbourside dining with a spectacular location at Yots Waterside, our alfresco venue with stunning city views. For cocktails with canapés or dinner with dancing, this stylish venue overlooks our historic vessel collection and the glamorous Darling Harbour precinct.

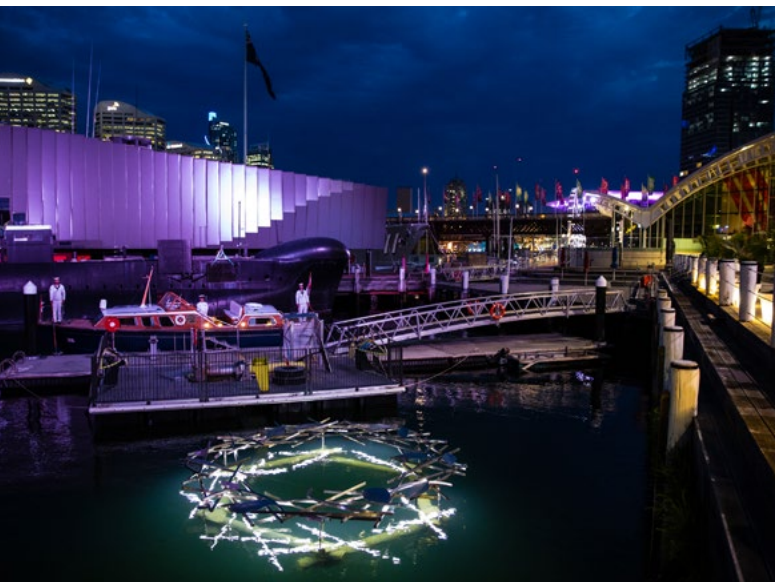
# MUSEUM

AUSTRALIAN NATIONAL  
MARITIME MUSEUM

## Venues







# Alfresco waterfront

Yots Waterside is our waterfront alfresco venue overlooking the museum's famous fleet of vessels. A vibrant marina during the day, Sydney's city lights dazzle at night. Flexible bi-fold glass walls can enclose or open up the space to your specific needs, providing easy access to the boardwalk.

## CAPACITY

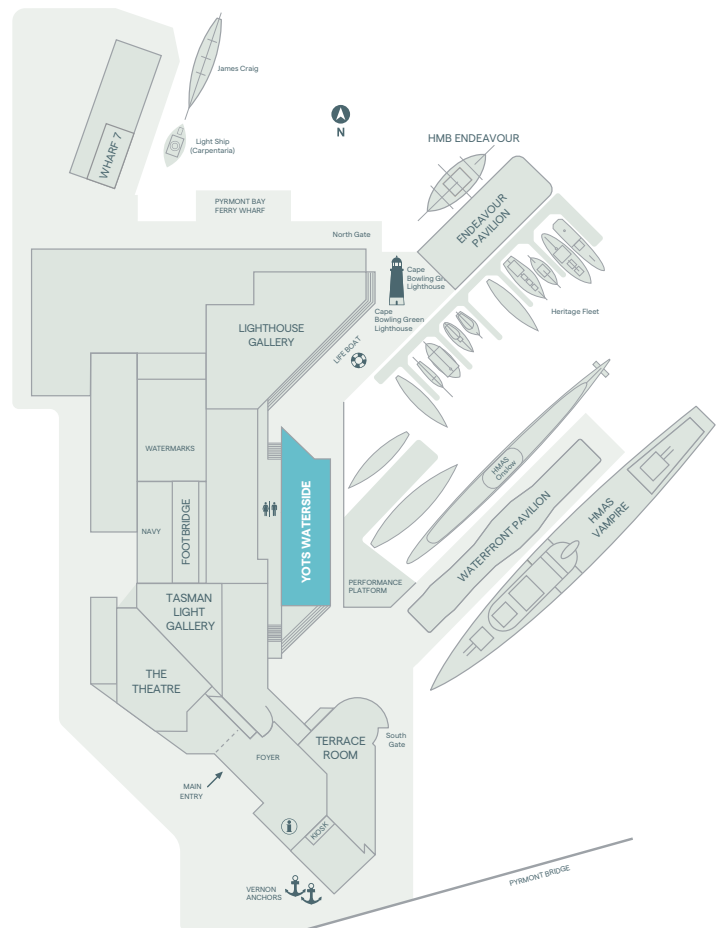
Cocktail	300
Banquet	180
Dinner with dance floor	140

## Waterside Studio

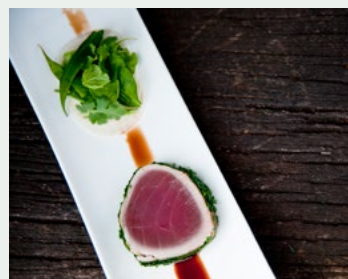
Cabaret	40
Theatre	60

## FEATURES

400sqm
Outdoor boardwalk area
Dual room configuration
Absolute waterfront location



Our award-winning caterer Laissez-faire sources fresh, local and seasonal produce for your event.



## AUSTRALIAN NATIONAL MARITIME MUSEUM

2 Murray Street, Sydney | 02 9298 3649 | [venues@sea.museum](mailto:venues@sea.museum) | [sea.museum/venues](http://sea.museum/venues)