

MUSEUM

Signals
Activities

Kids

Autumn 2019

March
April
May

SHEEPSHEAD WRASSE FISH

FLAMINGO

PHOTOGRAPHER

FLYING FISH

BOOBY BIRD

POLAR BEAR

WALRUS
SUBMARINE

Wild Wonders

Get your camera ready, we're going to take an adventure into the wild!

Under the sea, past dreamy island shores and across a frozen continent, there are curious and wonderful animals to discover.

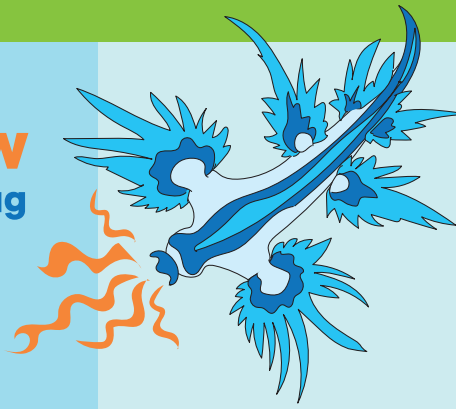
These animals are from all different wild places around the world. You can colour them in.

Can you spot their photos in the museum's galleries?

Blue Dragons are a kind of nudibranch, a sea slug. Even though they are tiny – just under 3cm long – and very beautiful, they can be dangerous. They love to eat bluebottles and their superpower is the ability to keep and store all the venom (stinging power) of these creatures in their fingertips.

How to draw a blue dragon sea slug

Follow these simple steps



1



2



3



4

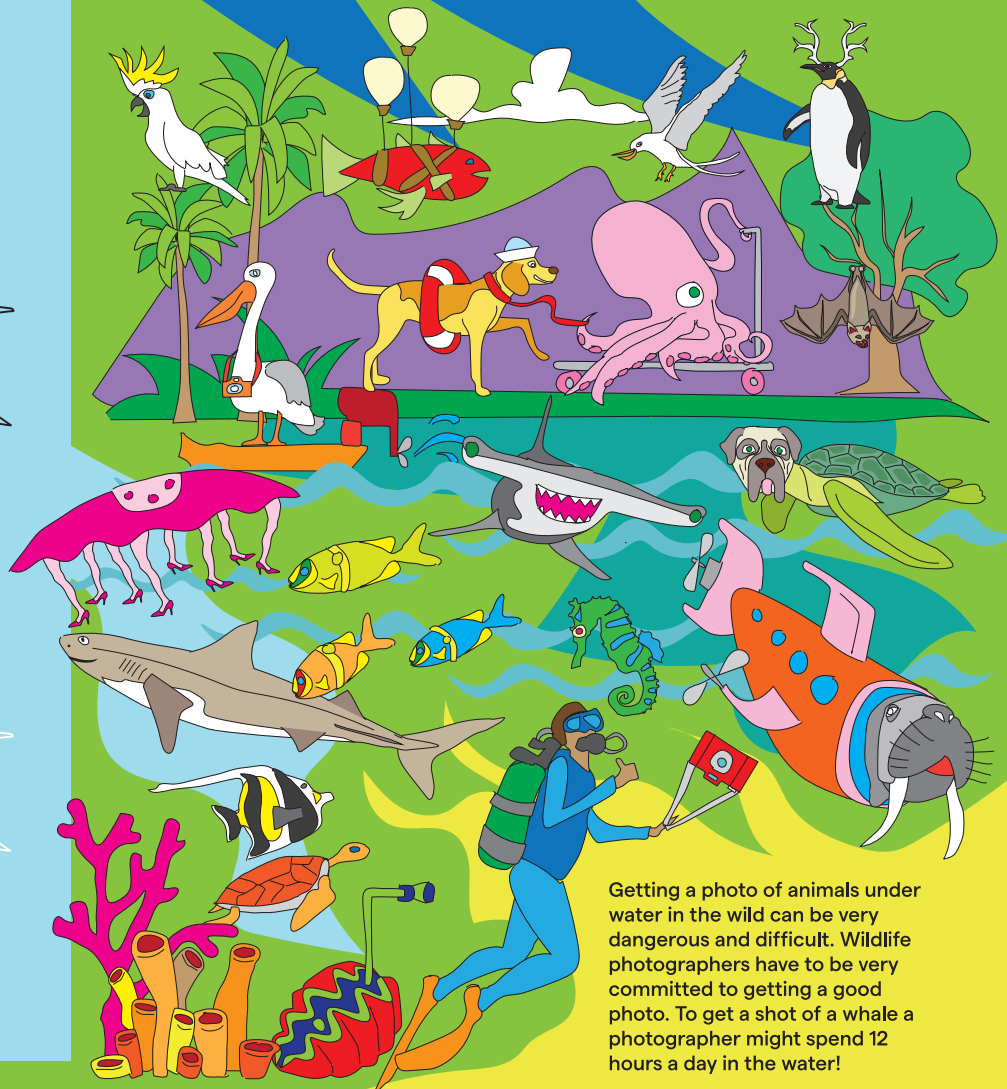


5



Wacky Wilderness

There are nine wacky things in this picture. Can you find what they are?



Getting a photo of animals under water in the wild can be very dangerous and difficult. Wildlife photographers have to be very committed to getting a good photo. To get a shot of a whale a photographer might spend 12 hours a day in the water!

Hidden Pictures Wild Find-A-Word

Find the words below hidden in this picture.
They could be backwards, forwards,
diagonal or downwards.

- | | | |
|-------------|------------|-------------|
| Species | Endangered | Desert |
| Habitat | Rare | River |
| Environment | Endemic | Mountain |
| Predator | Genus | Arboreal |
| Wilderness | Savannah | Terrestrial |
| Adaptation | Jungle | Aquatic |
| Camouflage | Rainforest | Marine |



Wild Science What Class Of Animal Am I?

An animal class is made up of animals that are all alike in important ways. Scientists have grouped animals into classes to make it easier to study them. Can you match some of the animals that fit into each of these categories?

Mammals

- Babies drink milk
- Breathe air
- Live on land or in sea

Reptiles

- Born on land
- Scaly skin
- Usually lay eggs

Whale

Class:

Snail

Class:

Amphibians

- Live on land and water
- Webbed feet
- Moist smooth skin

Fish

- Lives in water
- Gills to breathe
- Scales and fins

Birds

- Have wings and feathers
- Lay eggs
- Most can fly; a few can't

Salamander

Class:

Crab

Class:

Starfish

Class:

Shark

Class:

Penguin

Class:

Worm

Class:

Crocodile

Class:

Plankton

Class:

Protozoa

- Single-celled organism

Echinoderms

- Marine animals
- Radial symmetry

Molluscs

- Soft body with a shell
- Some have arms/tentacles

Arthropods

- More than 4 jointed legs
- Some have external skeleton/shell

Annelids

- Have segmented bodies
- Don't have legs
- Live on land or in water

In the exhibition - Wildlife Photographer of the Year Find Your Favourite Photo

Draw it here

What animals are in this photo?



If you could write a story or poem inspired by this photo, what would it be?
WRITE your story/poem here.

Does the animal look happy, sad or angry?

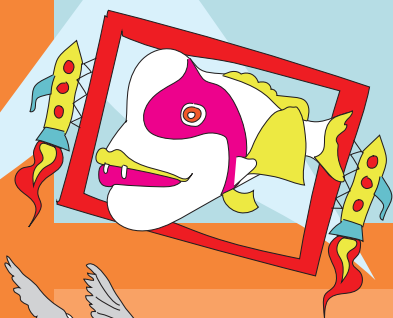
Is this a story about animals who are in danger?

What kind of animal is this?
Can you match it with its scientific class like we did on the last page?

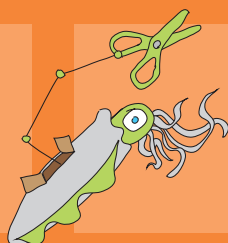
Where in the world does this animal live?

Does it have any special superpowers or abilities?

What is your favourite thing about this photo?



Share your creations with us
web@sea.museum
@sea.museum
#seamuseumkids



More activities to create at home
Download our printable templates for more creative activities on the website at sea.museum/kidscraft



More things to do at the museum
Visit the museum to enjoy our autumn programs and exhibitions
sea.museum/kids