

SIGNALS ACTIVITIES

SCUBA DIVER

Get ready to dive, dive, dive into an epic exploration of the deep sea! Colour in some things you might find there.

WINTER 2018

JUNE JULY AUGUST

R.O.V.

GOBLIN SHARK

VAMPIRE SQUID

DEEP-SEA DRAGONFISH

BATHYSCAPHE

DRAW YOURSELF HERE >

SHIPWRECK

DUMBO OCTOPUS

ANGLER FISH

SEA PIG

KIDS

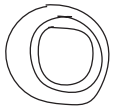
Hi



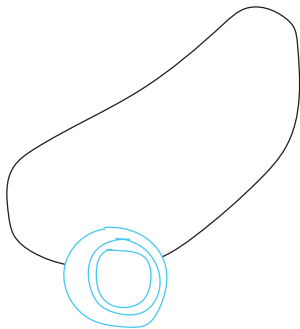
HOW TO DRAW A BATHYSCAPHE

Follow these simple steps to draw this deep-sea exploration vessel.

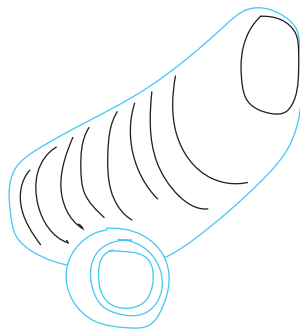
1



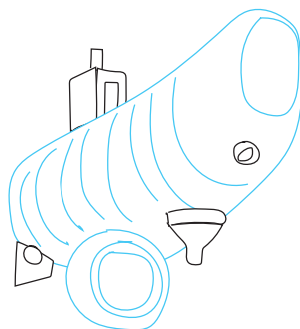
2



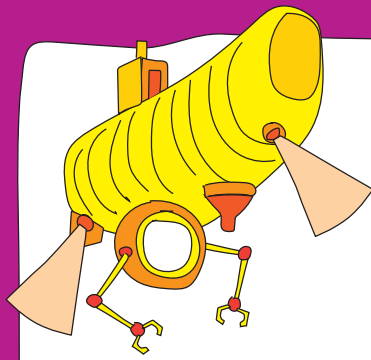
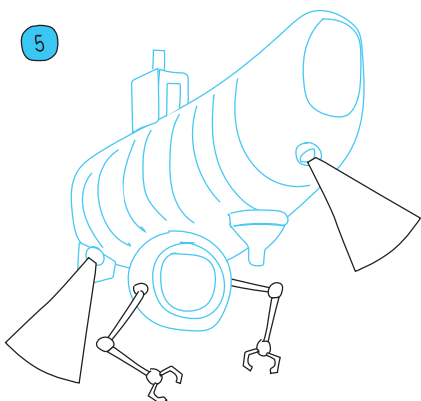
3



4



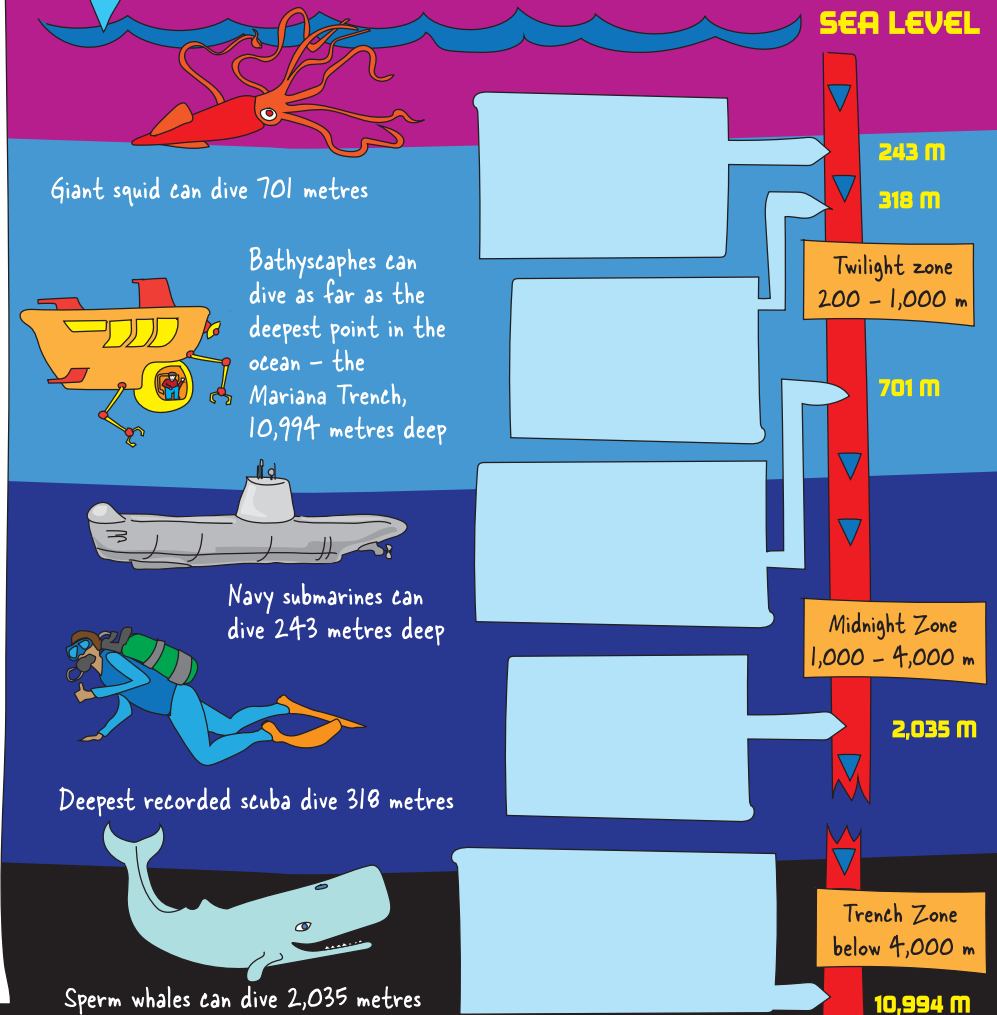
5



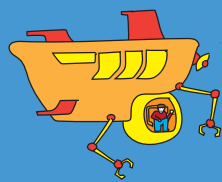
DID YOU KNOW... Bathyscaphes can travel further below sea level than a person with scuba gear, and even further than submarines. They are specially designed to reach the deepest parts of the ocean.

HOW DEEP CAN THEY DIVE?

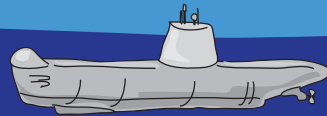
Each of these vessels or animals can dive very deep in the ocean. Can you draw them in order, from the shallowest depth to the greatest, on the diving chart? We've filled in the measurements to help you match them up.



Giant squid can dive 701 metres



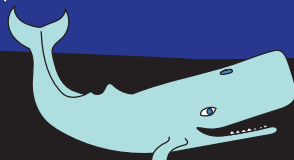
Bathyscaphes can dive as far as the deepest point in the ocean - the Mariana Trench, 10,994 metres deep



Navy submarines can dive 243 metres deep








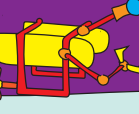
Deepest recorded scuba dive 318 metres



Sperm whales can dive 2,035 metres

HIDDEN PICTURES

How many of each of these can you find? What are they called?

- A 
-
- B 
-
- C 
-
- D 
-
- E 
-
- F 
-



A - 5 Blue Jellyfish, B - 3 Bathyscaphes, C - 7 Sea Figs, D - 4 Deep-sea Hatchetfish, E - 5 Dragonfish, F - 2 R.O.V.s.

MONSTER MATCH

Can you match the descriptions of these weird and wonderful deep-sea creatures to their illustration?

THE DUMBO OCTOPUS

Can live as far down as 7,000 metres deep. Has flaps on the side of its bell-shaped head



THE VAMPIRE SQUID

Has the biggest eyes of any animal (relative to its size). Releases glowing ink to confuse its predators while it escapes. Can turn itself inside out.

THE DEEP-SEA HATCHETFISH

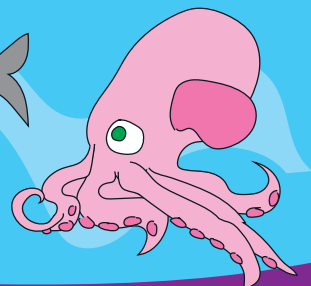
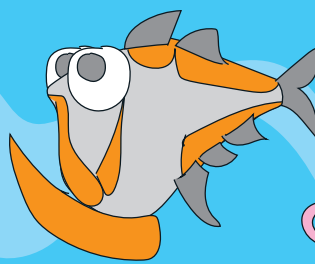
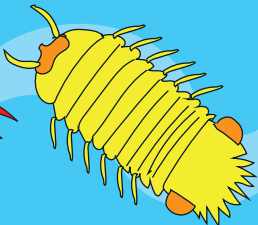
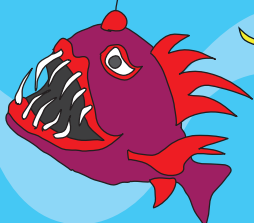
Has two googly eyes that point upwards so it can catch food falling from above. Only lives for less than a year.

ANGLER FISH

Uses its protruding light to attract food. Buries itself deep in the sand with only its lure sticking out.

GIANT ISOPOD

Looks like a common woodlouse, except it's gigantic (up to 76 cm long)! Can survive up to five years between meals.



IMAGINE YOU ARE TAKING A VOYAGE TO THE DEEPEST PLACES IN THE OCEAN.

What would you wear for your journey?

What vessel would you choose to take there?
Draw a design for your submersible.
Does it have a name?

What would you eat for dinner?

Where would you drive your submersible to?

What does it feel like there? What does it sound like? What does it smell like?

What adventures would you have out in the ocean?

Write a story about your own imaginary adventure here.

If you made an ocean animal your pet, which animal would you choose?



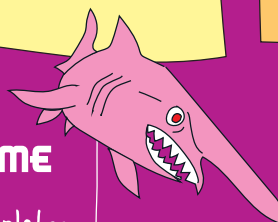
SHARE YOUR CREATIONS WITH US

web@anmm.gov.au

  @ANMMuseum #anmmkids

MORE ACTIVITIES TO CREATE AT HOME

Download our printable templates for more creative activities on the website at www.anmm.gov.au/kidscraft



MORE THINGS TO DO AT THE MUSEUM

Visit the museum to enjoy our winter programs and exhibitions www.anmm.gov.au/kids